



Canvas

ARLIS / Southern California Newsletter

VOLUME 31, ISSUE 1 / FALL 2010

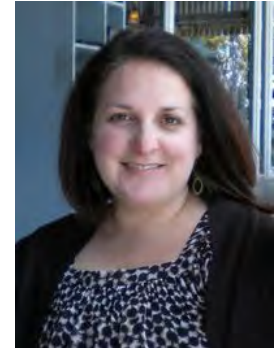
From the Chair

It has been a great year as Chair of ARLIS/SC and I am so pleased that it was my second tour of duty! I was also chair way back in 2001 when the ARLIS/NA annual conference was in Los Angeles, and I am excited that **our chapter will once again be hosting the conference in 2013, this time in Pasadena!**

I hope you have all noticed that we have been trying to do more small activities like the March outing to Downtown LA and the June event in Culver City and West Hollywood. Along with these smaller more social events we will also have an annual business meeting with an all day event comprised of visits and/or talks. ARLIS/SC hopes to continue this pattern to keep our members engaged and also provide time for networking, expanding our professional knowledge and visiting the outstanding

institutions that we are fortunate to have in Southern California. We also had a vibrant meeting at the Boston conference with almost 20 chapter members in attendance and that was great considering it was at 8am on a Saturday! We also had a fun dinner outing in Boston on the last night. I am looking forward to seeing many of you in Minneapolis in 2011 for some business and fun too!

It has been great working with the ARLIS/SC board for so many years and I am looking forward to how I can contribute as past-chair next year. The chapter has been growing in numbers and participation and I suspect that with 2013 on the horizon we will continue to grow into an even better chapter! The chapter's combined website/blog <http://arlis-sc.org/> will continue to develop and our pres-



ence on **Facebook** will also remain as a way to communicate with our members. If you have suggestions on how to improve our online presence please contact me.

There will be some exciting news coming about the 2013 conference as details are confirmed and I look forward to all of the hard work that we have to do in the coming years!

—Alyssa Resnick

CONTENTS

Member Spotlight	2
38th Annual Conference	3
Chapter Awards	4
Meetings & Events	5
Chapters Liaison	6
News & Notes	7

Save the Date!

The 39th **ARLIS/NA Annual Conference** will be a joint conference with the Visual Resources Association (VRA) from **March 24-28, 2011** in **Minneapolis**.



The preliminary conference program is now online:

<http://www.vra-arlis2011.org/>

Member Spotlight:

ARLIS/NA Mentoring Workshop and Program

On February 15, 2010 the Southern California chapter led the ARLIS/NA Mentoring Workshop. This workshop and year long program has been held at the ARLIS/NA Annual Conference since 2005. The Southern California chapter is the first chapter to pilot the workshop and year long program at the local level. Our mentoring workshop, moderated by Virginia Allison and Cathy Billings, consisted of 5 pairs of mentee/mentors from around Southern California. Throughout the year we have been checking in with the pairs to gain feedback about their experiences. Recently, **Sarah Sherman** discussed the program with pair **Antoinette Avila** (mentee) and **Krista Ivy** (mentor).



Antoinette Avila & Krista Ivy

SS: *What's your current job title and institution?*

AA: I am a library assistant in the reference department at the University of California, Irvine, Langson Library.

KI: I am a Reference and Instruction Librarian at the University of California, Riverside.

SS: *Why did you want to participant in this program as a mentee or mentor?*

AA: Krista is the art, art history, and photography librarian at UCR. I am interested in working with photographic collections so our pairing has been a good match for me. My reasons for participating in this program were to build new relationships, gain insight into the area of art librarianship, and to be able to consult with an experienced professional librarian.

KI: I wanted to give back to the profession. My supervisor at my first professional job was an incredible mentor even though she never officially had that role. Within the first month on the job, she had me attending my first ARLIS chapter meeting where I was encouraged to get involved!

SS: *How frequent are you in touch with each other and by what means?*

AA: Krista and I fortunately work and live in neighboring counties. We have devised a plan to meet every two months and have done so twice. Our first get-together was at a restaurant where we had lunch and plotted out more specific goals. During this session we brainstormed and came up with some creative ways for me to gain more experience while I search for librarian jobs. We also regularly e-mail each other which works well with both of our busy schedules.

KI: Antoinette and I contact each other via email approximately once a week. At the beginning of the mentorship it was not as often, which makes sense in that as the relationship develops, communication becomes less formal but more frequent. During our in person meetings we discuss our goals as well as catch up on our jobs, projects, professional development and life in general.

SS: *What is the most rewarding part about this mentor/mentee relationship?*

AA: I have really enjoyed getting to know Krista. We share some common interests and have productive, enjoyable, and interesting conversations. Our brainstorming sessions have given me many useful ideas and keep me on track toward achieving my goals.

KI: Getting to know Antoinette has been the best part of the mentoring relationship. She is an inspiring librarian and I am excited to be a part of her professional life. In addition, being a mentor has broadened my knowledge of the profession and the current challenges and solutions being approached. It also provides an opportunity for me to reflect on my involvement and commitment to the success of the profession.

ARLIS/NA Mentoring Workshop and Program continued...

SS: What were your expectations of the program? Now after 11 months do you feel your expectations have been met?

AA: My expectations were to meet new people and be exposed to other ideas and experiences. These expectations have been met. Additionally, I feel that I have someone that I can consult with who will give me honest and helpful advice.

KI: My expectations of the program were to participate in a mentoring relationship that allows growth and support for both mentee and mentor. These expectations have been met with this well designed and executed program.

SS: Would you recommend fellow colleagues to participate in the program at the local or national level and why?

AA: I definitely recommend the mentoring program at both the local and/or the national level. I only have the experience at the local level but I believe that e-mailing and/or chatting would work well for those not living nearby. E-mail has worked well in my situation but I also enjoy being able to meet and discuss in person.

KI: Definitely! I feel that I have gained so much from this program.

Stay Tuned...

Are you interested in participating in the year-long ARLIS/NA Mentoring Workshop and Program? The next workshop will be given at the 2011 ARLIS/NA Annual Conference in Minneapolis, March 24-28.

Members at all stages of their careers are encouraged to apply to be mentees or mentors!

Stay tuned for announcements about the workshop as the conference gets closer or **visit the website** of the ARLIS/NA Mentoring Subcommittee for more information:

<http://www.arlisna.org/organization/com/profdev/mentor/index.html>

38th Annual ARLIS/NA Conference

ARLIS/NA members gathered in **Boston, Massachusetts** from **April 23-28, 2010** for the 38th annual conference. Along the waterfront, members participated in sessions, workshops, special events, and tours. Our Southern California chapter members contributed to the program in the following ways:

- **Laurel Bliss** (San Diego State University) gave a talk on *Flickr as Discovery Tool: A Pilot Project for Digital Collections at San Diego State University Library* in the session *Global Visions: Building Image Collections in a Participatory Culture*.
- The session moderator for *Creative Practice in Cyberspace* was **Allison R. Schulte** (Tom of Finland Foundation).
- **Virginia Allison** (University of California, Irvine) presented the poster session *Grass Roots Visual Literacy: An Organic Approach*.



An evening out at Legal Test Kitchen with ARLIS/SC & ARLIS/NC members



View of Boston skyline from the Seaport Hotel conference location. The **Institute of Contemporary Art** is pictured on the right. (Photo by Bryan Loar)

Conference website and photographs can be found at http://www.arlisna.org/news/conferences/conf_index.html

Chapter Awards

This year's **ARLIS/SC Student Travel Award** went to **Maggie Hanson**. There were no applicants this year for the Judith A. Hoffberg Travel Award. Below, Maggie describes what winning the award meant to her:

I was honored to attend this year's ARLIS/NA Conference in Boston, MA with the help of travel funds from the regional chapter. I would not have been able to attend otherwise and I am so grateful! The experience was a wonderful entrée into the world of professional conferences and I plan to continue attending as regularly as I possibly can.

I was able to attend sessions during every time slot and was pleased across the board with the content and delivery of the presentations. Among the sessions that I found to be most informative and engaging were *Confronting the Future*, *Global Visions/Image Collections*, *Redefining the Discrete Practices of the LAMS*, *Building Digital Collections*, and the *Evolving Role of the VR Professional*.

I was thrilled at the strong focus on the fluidity between and professional collaborations amongst colleagues and institutions across the LAMS

professions and the apparent dissolution of boundaries between these types of information institutions.

In addition to the educational and informative benefits of attending the conference, I was thrilled at the opportunity to network with colleagues and interact with people in the field, who I know I'll keep in touch with in the future. I recently accepted a new position as Collections Information Manager of the Portland Art Museum (Portland, OR) and my attendance at this year's ARLIS/NA conference will, I'm sure, be integral to my success not only because of what I learned, but also because of the strong support that I now realize is available to a young professional like myself.

Transitioning from the library realm to a more collections-based atmosphere will present challenges, but I look forward to engaging with the metadata of PAM's collections from as broad a perspective as possible, embracing my training as an art librarian! The professional connections I made in Boston will no doubt become a vital support network to me as I embark on this new phase of my career and seek the advice and guidance of fellow art librarians and visual resource professionals.

Thank you so much for this opportunity and for encouraging me to become a more active participant in the broader professional community of our wonderful field. I look forward to seeing you all in Minneapolis!

Watch the **ARLIS-CA listserv** for information about the 2011 **ARLIS/SC Student Travel Award** and the **Judith A. Hoffberg Travel Award!**

Stay in the loop!

Subscribe to the **ARLIS-CA** listserv for info from the SoCal & NoCal chapters.

Send an email to

arlis-ca-request@lists.csueastbay.edu with the word "subscribe" in the subject line.



You can also follow us via the **ARLIS Southern California Chapter Facebook page!**



Chapter Chair Alyssa Resnick gives Maggie her award in Boston

Chapter Meetings and Day Trips

Visit <http://arlis-sc.org/> for more details about this year's meetings and for the business meeting minutes from November 5



Touring Sci-Arc

On **March 26** chapter members visited the **Los Angeles Public Library Central Library** in downtown Los Angeles for an informative docent led art and architecture tour of the building, followed by a tour of the Art, Music, Recreation department led by librarian Emma Roberts. After lunch with colleagues at a hip new downtown restaurant, the group drove to northern edge of downtown for a tour of the library and campus of **Sci-Arc (Southern California Institute of Architecture)** led by library manager, Kevin McMahon. Los Angeles Public Library <http://www.lapl.org/central/art.html> and Sci-Arc Kappe Library http://www.sciarc.edu/portal/about/kappe_library/index.html.

A business meeting was held on **April 24** in **Boston** at the ARLIS/NA Conference. Maggie Hanson was awarded the Southern California Chapter Student Travel award. Meeting minutes can be found on the ARLIS/SC blog <http://arlis-sc.org/2010/06/minutes-arlissc-meeting-at-arlisna-annual-conference-boston/>. The following day Southern California chapter members took a short walk down the waterfront to

gather with our North California chapter colleagues for a social mixer.

On **June 18**, members spent a half day together. The day began with lunch in Culver City followed by a visit to the **Center for Land Use Interpretation** for a tour and to see the exhibition. The next destination across town was the Mak Center. Members took a tour of the **Schindler House at the Mak Center**, followed by a tour of the **Mackey Apartments** a short distance away. Center for Land Use Interpretation www.clui.org and the Mak Center www.makcenter.org.



At Schindler's Mackey Apartmentmmts

Our final meeting of the year took place on **November 5** at the **California Museum of Photography** in Riverside. This full day meeting included a business meeting followed by a jam packed line up of tours such as a docent led tour of the **Mission Inn Hotel**, tours of the exhibitions *Library of Dust* and *History's Shadow*, a tour of the newly opened **Culver Center of the Arts** and its current exhibition *Re:Cycle—Bike Culture in Southern California*. The day was capped off with a tour of the California Museum of Photography's Library & Collections, including new state of the art earthquake proof storage for over 150,000 glass plate negatives. For more information about these Riverside landmarks visit their websites at www.missioninn.com, www.culvercenter.ucr.edu and www.cmp.ucr.edu.



Jonathan Green, UCR ARTSblock Executive Director describes his new glass plate negative storage



Inside the Culver Center of the Arts with Tyler Stallings, Artistic Director

From the Board Chapters Liaison

Greetings Southern California ARLIS/NA Chapter members!

It's my privilege to provide for you a brief little update on behalf of the ARLIS/NA Executive Board.

The board just completed its mid year board meeting in picturesque Santa Fe, New Mexico, on September 23-24. We met at the lovely Georgia O'Keeffe Museum, where we mused and dialogued about many things. Here are a few highlights:

The Board is very excited about the upcoming ARLIS/NA Annual Conference in Minneapolis in March 24-28, 2011. This conference will be a joint conference with our Visual Resources Association colleagues, and planning for the conference is moving along smoothly. The sessions should be fascinating and we look forward to exploring Minneapolis, the Walker Art Center, and the city's other cultural offerings.

Strategic Planning: ARLIS/NA has struck a diverse committee to facilitate the creation of a new strategic plan for the years ahead. With libraries and librarianship experiencing such profound transitions and changes, we hope that the newly crafted strategic plan will guide us well, and help us to focus the organization on areas that are most meaningful to us all. To this end, ARLIS/NA Board members are doing their best to be present at chapter meetings that are happening throughout this fall to help gather chapter member's perspectives and input for the plan. Stay tuned for more about that.

We also spoke about many other interesting topics such as the upcoming Summer Educational Institute (SEI); updates from TEI, our management company, approved the ARLIS/NA budget, the new ARLIS/NA Executive Board slate, and more! We'll definitely be in touch about other developments from the mid-year board meeting.

That's about all I can think of for now. If any of you have questions about this update or anything at all, please feel free to send me an email at vanessa.kam@ubc.ca

I look forward to reading this newsletter and seeing what you have all been up to!

Best wishes for a beautiful fall season,

Vanessa Kam
ARLIS/NA Chapters Liaison
Head, Art + Architecture + Planning Library
University of British Columbia



News and Notes from ARLIS/SC Members

UCSD Arts Library

from Leslie Abrams, Head, UCSD Arts Library

A year ago, the renovated Arts Library opened at the University of California, San Diego. As with many renovations, opening day often does not mean everything is completed, and this has been true with our project. We recently opened three viewing rooms for groups of 8-12 students with 51 inch high definition monitors. The media signals are delivered from the media rack behind our desk via fiber in the ceiling. Over the summer we installed new signage to enable users to better navigate our new open spaces. Beyond the renovation, as part of a total redesign of all the UCSD Libraries pages, we just released a web-page redesign for the Arts Library <http://libraries.ucsd.edu/locations/arts/index.html>. Finally, about 20,000 books from the Arts Library collection were digitized by the Google Books Library Project. In the next few months, about 40,000 items from our music books and scores collection will be digitized. For selected photos of the Arts Library please visit our Flickr site <http://www.flickr.com/photos/artslibrary/>.

UCLA Arts Library

from Robert Gore, Visual Arts Librarian
and Janine Henri, Architecture, Design, and Digital Services Librarian

The UCLA Library hours, cut back in 2009/2010 due to the budget crisis, have now been restored. This includes the UCLA Arts Library's hours. In addition, on June 10, 2010 **University Librarian Gary Strong** provided an **update** about the Arts Library:

Last fall the UCLA Library created an internal study team to examine the service and materials issues associated with shifting the collections, services, and staff of the Arts Library to one of the large libraries.

The internal study team collected statistics on the size and location of collections, circulation figures, gate counts, and use of electronic resources as well as more subjective information about how students and faculty use the facility and its collections and services. They also summarized community factors, among them how professionals at area museums and in creative industries use the library.

I am reviewing the team's report, and I and my senior management are in the process of discussing it in greater detail. It is clear that we will need more time to examine this complex, multifaceted subject further and to gather input from constituencies including administrators, faculty, students, and donors. Thus, the Arts Library will continue to operate in its present location for the immediate future.

Please visit Gary Strong's blog for more information about the UCLA Libraries, including the latest news about the Research Library's renovation project <http://blogs.library.ucla.edu/universitylibrarian/>.

ARLIS/SC 2010 Executive Board

Alyssa Resnick, Chair

Glendale Public Library
aresnick@ci.glendale.ca.us

Krista Ivy, Vice-Chair/Chair Elect

University of California, Riverside
kristai@ucr.edu

Virginia Allison, Secretary

University of California, Irvine
lallison@uci.edu

Cathy Billings, Treasurer

Brand Library & Art Center
cbillings@ci.glendale.ca.us

Sarah Sherman, Past Chair

The Getty Research Institute
ssherman@getty.edu



L-R: Alyssa Resnick, Virginia Allison, Janine Henri (2011 Vice-Chair/Chair Elect), Krista Ivy, Cathy Billings. Not pictured: Sarah Sherman

**Not a member of ARLIS/SC?
Need to renew for 2011?**

Visit

[http://arlis-sc.org/about/
membership/](http://arlis-sc.org/about/membership/)

for the membership form.

ARLIS/SC is the Southern California Chapter of the [Art Libraries Society of North America](#). Founded in 1974, the Chapter is proud to continue providing programs and networking opportunities to our members who include librarians, archivists, curators, and friends from the Southern California area, from San Diego to Santa Barbara.

Newsletter Editor: Sarah Sherman
Newsletter Designer: Cathy Billings



ARLIS SOUTHERN CALIFORNIA